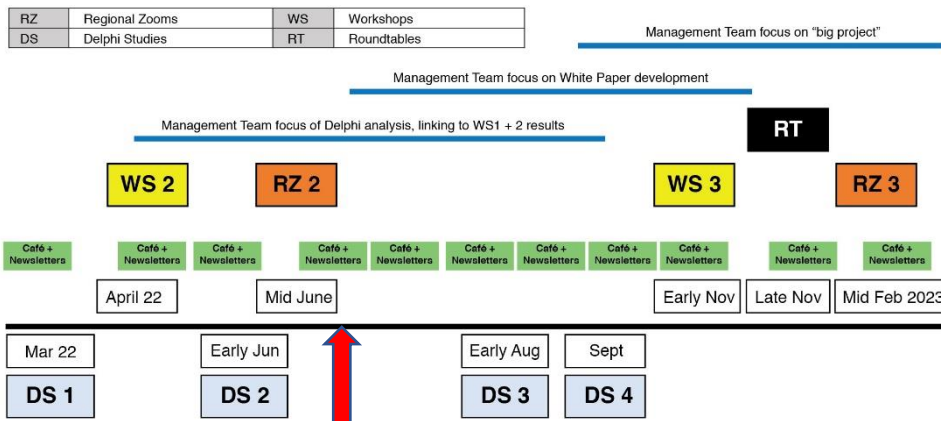


NEWSLETTER 21: 8 July 2022

Progress

Today's Newsletter focuses on behind-the-scenes work. While we continue to plan Team activities for you such as Cafes and another set of Regional Zooms for informal WS2 feedback, the Management Team is working hard on the 'blue line' activities at the top of the diagram below.



Delphi and WS2 Data Analysis. Now $\frac{3}{4}$ completed, Delphi1 analysis is tending towards validation of WS1 analysis with some interesting developments; we will report when the analysis is completed, but in essence we are (1) accessing a significantly broader array of known research; (2) not finding any new 'gaps' and 'needed research'; but are (3) adding significant sub-codes - the Delphis are providing nuanced and specific data.

The White Paper. This is expected to have (Part 1) international and sector implications of 'gaps and needed research', leading to specific plans for further research; and (Part 2) appendices containing our published reports. Regarding Part 1, this will have (a) a 'feasibility and focus' section, followed by (b) a 'strategy and financing' section. These ideas are emerging more-and-more clearly as we delve into your data. Our plan is to have the basic ideas ready for feedback at Workshop 3, and the White Paper ready for discussion at the Roundtables.

The 'big project'! While it would not be sensible to hypothesise too much, we are delighted that our Scoping Study suggests a large-scale international project is a realistic goal for our network. At present, it seems either a 'portfolio of projects' or a 'hierarchical' approach seems possible. More on that as we develop the White Paper.

Welcome

We welcome Kelly Day to our Management Team. Kelly will be based with Wes and Marian at the University of Melbourne site as a project Research Assistant. One task for her is the logistics of the Roundtables, tasks such as organising your travel and accommodation, but also assisting report development.

Upcoming Café Sessions

1. Have we 'peaked' in terms of ILE designs? What's next?

Hosted by Wes Imms

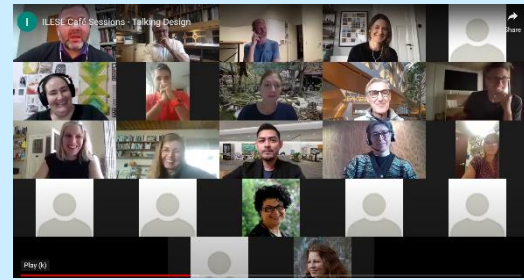
Thursday 21st July, 7am (Melbourne time)

Zoom

link: <https://unimelb.zoom.us/j/84415359560?pwd=Sk1FUkxjY21uSW1DWUZUclBPYm9Odz09>

Zoom passcode: 057685

N.B this Café is scheduled to suit Australasia/SE Asia/USA, but all welcome.



2. How do we leverage teacher collaboration in the context of our ILEs?

Hosted by Chris Bradbeer

Thursday 28th July 7pm (Auckland, NZ time)

Zoom

link: <https://unimelb.zoom.us/j/83257593638?pwd=hey3oowVeHyIO5YKBAoe5p2Jrt-9Ww.1>

Zoom passcode: 032889

N.B an aim of the Café sessions is to build international, cross-sector networks and special interest groups. To help achieve this, be aware sessions will be video recorded and published on ILE+SE's publicly accessible website

Contact your Team Leader with any queries & for further information contact

the ILESE team at

info@ilesescopingstudy.com.au

www.ilesescopingstudy.com

Follow us on Twitter @IleseProject